

# UBL12H



Light Efficiency:

38 Lumen/Watt

Light Quality:

CRI: 67.3

Color Temperature:

10320 K

Output: 2401 lm

Peak: 18596 cd

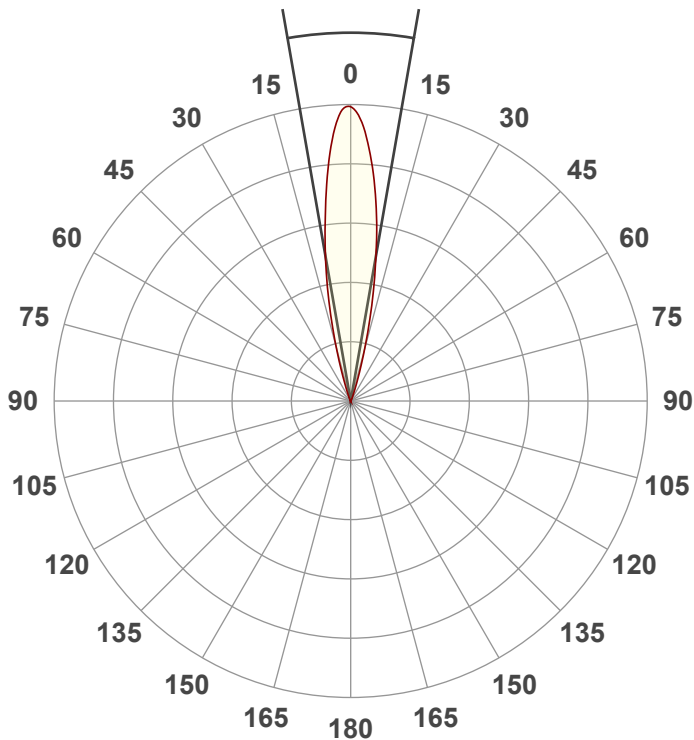
Power: 64.0 W

PF: 0.59



Beam Angle

19.7°



Test:

Full On No UV

Date:

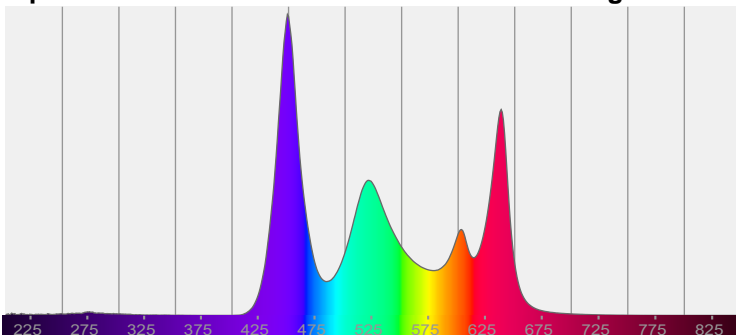
2/5/2024

Note:

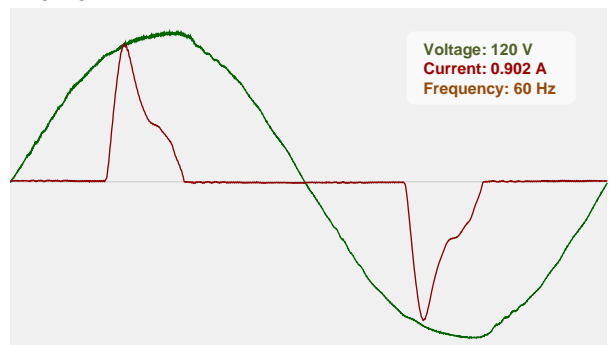
CIE 1931  
x: 0.288  
y: 0.269

Spectra

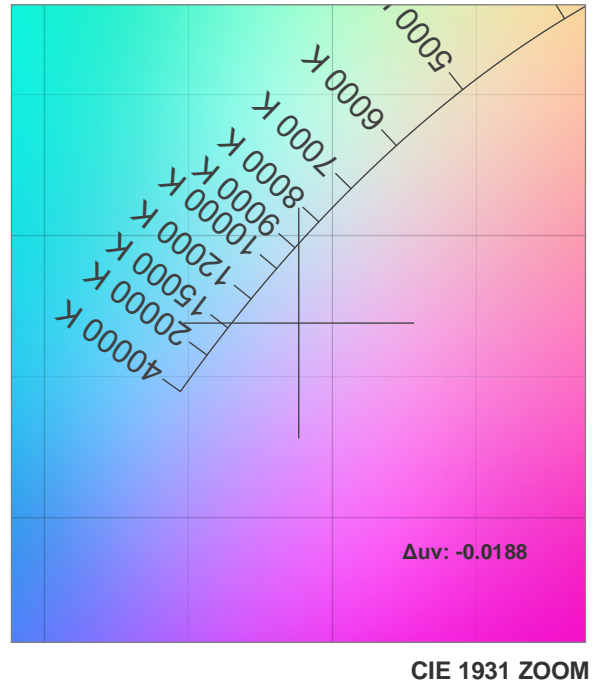
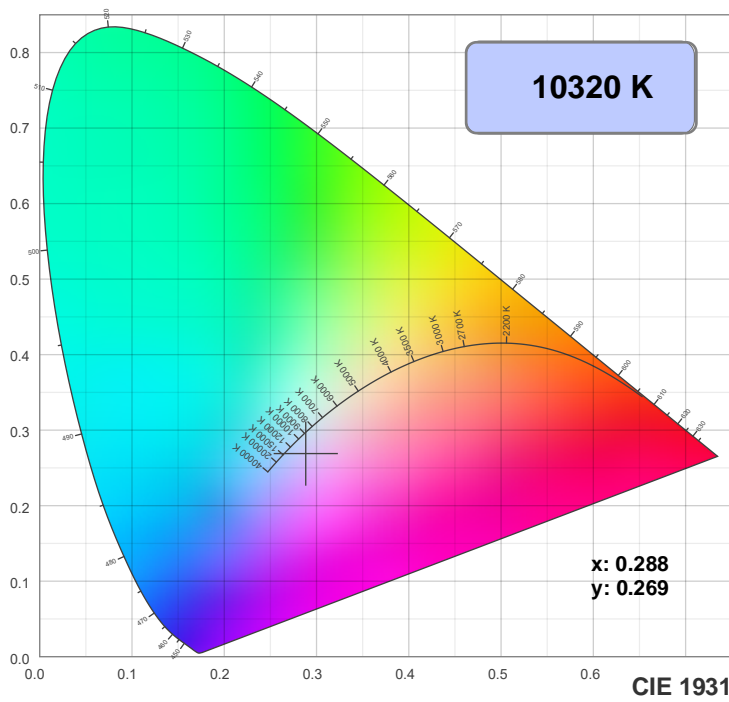
Dominant Wavelength: 360nm



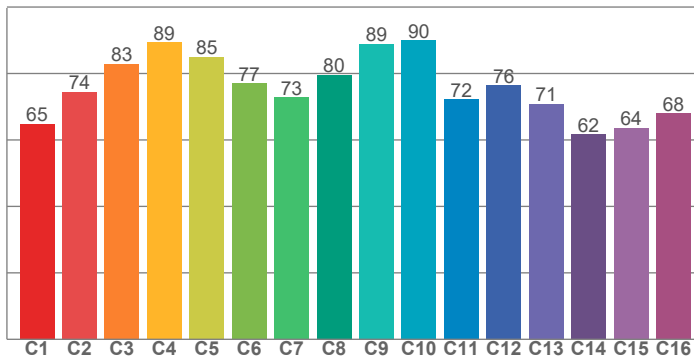
Power



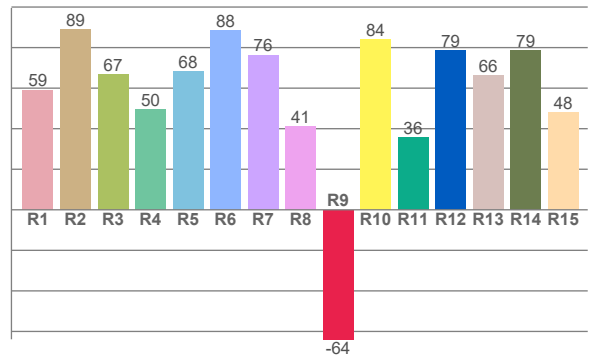
## Color Details



TM30: 78.0



CRI: 67.3 (R1-R8)



CRI R values, only R1-R8 are used to calculate final CRI value

R1	R2	R3	R4	R5	R6	R7	R8	R9	R10	R11	R12	R13	R14	R15
59.2	89.0	66.9	49.6	68.3	88.3	76.4	41.0	-63.9	84.1	35.9	78.6	66.4	78.6	48.0

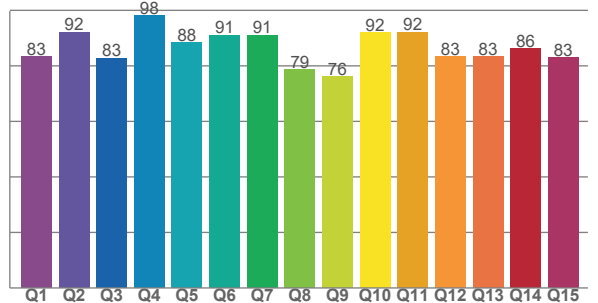
TM30 C values, 16 binned values out of total of 99 C values

C1	C2	C3	C4	C5	C6	C7	C8	C9	C10	C11	C12	C13	C14	C15	C16
64.9	74.4	82.9	89.3	85.0	77.0	72.7	79.6	89.0	90.0	72.2	76.5	70.8	61.6	63.6	68.0

CQS Q values

Q1	Q2	Q3	Q4	Q5	Q6	Q7	Q8	Q9	Q10	Q11	Q12	Q13	Q14	Q15
83.3	92.1	82.8	98.1	88.4	91.1	91.1	78.7	76.2	91.9	92.2	83.4	83.3	86.2	82.9

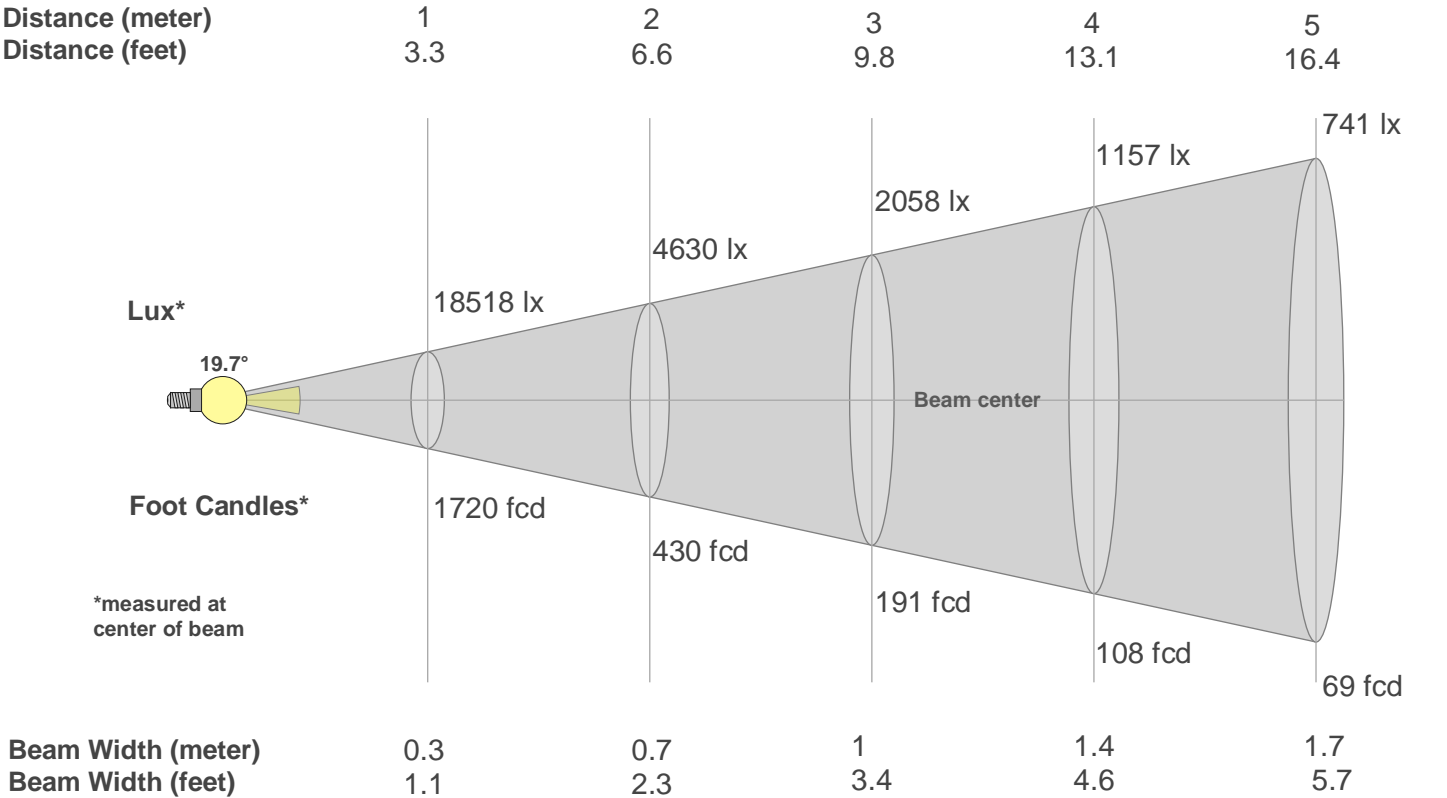
CQS: 85.6



## Color Parameters

Color Temperature	Color Rendering Index	Red Component	Color Fidelity	Color Gamut	Color Quality Scale	Color Coordinate CIE 1931	Color Coordinate CIE 1931	Color Coordinate	Color Coordinate	Color Deviation from Black Body
CCT	CRI	CRI R9	TM30 Rf	TM30 Rg	CQS	x	y	u	v	$\Delta uv$
10320 K	67.3	-63.9	78.0	117.8	85.6	0.288	0.269	0.204	0.286	-0.0188

Beam Details



Lux\*

19.7°

Foot Candles\*

\*measured at center of beam

18518 lx

4630 lx

2058 lx

1157 lx

741 lx

1720 fcd

430 fcd

191 fcd

108 fcd

69 fcd

Beam center

Beam Width (meter)

Beam Width (feet)

0.3

1.1

0.7

2.3

1

3.4

1.4

4.6

1.7

5.7

Beam Intensities from 1-20m																				
m	1	2	3	4	5	6	7	8	9	10	11	12	13	14	15	16	17	18	19	20
ft	3.3	6.6	9.8	13.1	16.4	19.7	23	26.2	29.5	32.8	36.1	39.4	42.7	45.9	49.2	52.5	55.8	59.1	62.3	65.6
lx	18518	4630	2058	1157	741	514	378	289	229	185	153	129	110	94	82	72	64	57	51	46
fcd	1720.4	430.1	191.2	107.5	68.8	47.8	35.1	26.9	21.2	17.2	14.2	11.9	10.2	8.8	7.6	6.7	6	5.3	4.8	4.3

Intensities in 0° C-plane																			
0°	1°	2°	3°	4°	5°	6°	7°	8°	9°	10°	11°	12°	13°	14°	15°	16°	17°	18°	19°
18.5K	18.5K	18.2K	17.5K	16.5K	15.4K	14.2K	12.9K	11.5K	10.3K	9.1K	8.0K	6.8K	5.7K	4.6K	3.6K	2.7K	2.0K	1.4K	1.0K
100%	100%	98%	94%	89%	83%	77%	69%	62%	56%	49%	43%	37%	31%	25%	19%	15%	11%	8%	6%

Intensities in 90° C-plane																			
0°	1°	2°	3°	4°	5°	6°	7°	8°	9°	10°	11°	12°	13°	14°	15°	16°	17°	18°	19°
18.5K	18.5K	18.2K	17.5K	16.5K	15.4K	14.2K	12.9K	11.5K	10.3K	9.1K	8.0K	6.8K	5.7K	4.6K	3.6K	2.7K	2.0K	1.4K	1.0K
100%	100%	98%	94%	89%	83%	77%	69%	62%	56%	49%	43%	37%	31%	25%	19%	15%	11%	8%	6%

Intensities in 180° C-plane																			
0°	1°	2°	3°	4°	5°	6°	7°	8°	9°	10°	11°	12°	13°	14°	15°	16°	17°	18°	19°
18.5K	18.3K	17.7K	17.0K	16.1K	15.1K	14.1K	12.9K	11.7K	10.5K	9.1K	7.9K	6.7K	5.5K	4.4K	3.4K	2.6K	1.9K	1.4K	1.0K
100%	99%	96%	92%	87%	82%	76%	70%	63%	57%	49%	43%	36%	30%	24%	19%	14%	10%	7%	5%

Intensities in 270° C-plane																			
0°	1°	2°	3°	4°	5°	6°	7°	8°	9°	10°	11°	12°	13°	14°	15°	16°	17°	18°	19°
18.5K	18.3K	17.7K	17.0K	16.1K	15.1K	14.1K	12.9K	11.7K	10.5K	9.1K	7.9K	6.7K	5.5K	4.4K	3.4K	2.6K	1.9K	1.4K	1.0K
100%	99%	96%	92%	87%	82%	76%	70%	63%	57%	49%	43%	36%	30%	24%	19%	14%	10%	7%	5%

Beam Angle 50%	Field Angle 10%	Cutoff Angle 2,5%	Intensity Ratio in 120° Cone	Intensity Ratio in 90° Cone
19.7°	34.3°	43.7°	100.0%	100.0%